



rtc[®]

COUPLING TECHNOLOGY



152

rtc TYPE



Temperature Range - Temperaturbereich

FPM (V)	-20°C + 180°C (- 4°F + 356°F)
EPDM (E)	-40°C + 150°C (- 40°F + 302°F)
FFKM (W)	0°C +270°C (+23°F +518°F)

Max. Working Pressure - Max. Betriebsdruck

rtc 152.03	60 bar (870 PSI)
rtc 152.06	60 bar (870 PSI)
rtc 152.08	60 bar (870 PSI)
rtc 152.10	60 bar (870 PSI)
rtc 152.12	60 bar (870 PSI)
rtc 152.16	60 bar (870 PSI)
rtc 152.20	60 bar (870 PSI)
rtc 152.25	40 bar (580 PSI)
rtc 152.32	25 bar (362 PSI)
rtc 152.38	20 bar (290 PSI)
rtc 152.50	15 bar (217 PSI)

Flow size - Nennweiten

rtc 152.03	3 mm
rtc 152.06	6 mm
rtc 152.08	8 mm
rtc 152.10	10 mm
rtc 152.12	12 mm
rtc 152.16	16 mm
rtc 152.20	20 mm
rtc 152.25	25 mm
rtc 152.32	32 mm
rtc 152.38	38 mm
rtc 152.50	50 mm

Material

Socket Body- Kupplungsgrundkörper	Brass - Messing
Sleeve - Hülse	Stainless Steel - Edelstahl
Valve - Ventil	Brass - Messing
Locking Ring - Sprengring	Stainless Steel - Edelstahl
Balls - Kugeln	Stainless Steel - Edelstahl
Seals - Dichtungen	FKM (V)
Plug - Nippel	Stainless Steel - Edelstahl
Back part Nippel - Nippel Hinterteil	Brass - Messing

Standard version

FPM (V)
Leakage free design
Special designed valve for high flow rate.

Standardversion

- FPM (V)
- Leckagefrei
- Spezielle Ventiltechnik ermöglicht hohen Durchfluss

Options - Optionen

E EPDM Seal - EPDM Dichtung
W FFKM Seal - FFKM Dichtung

Using Area

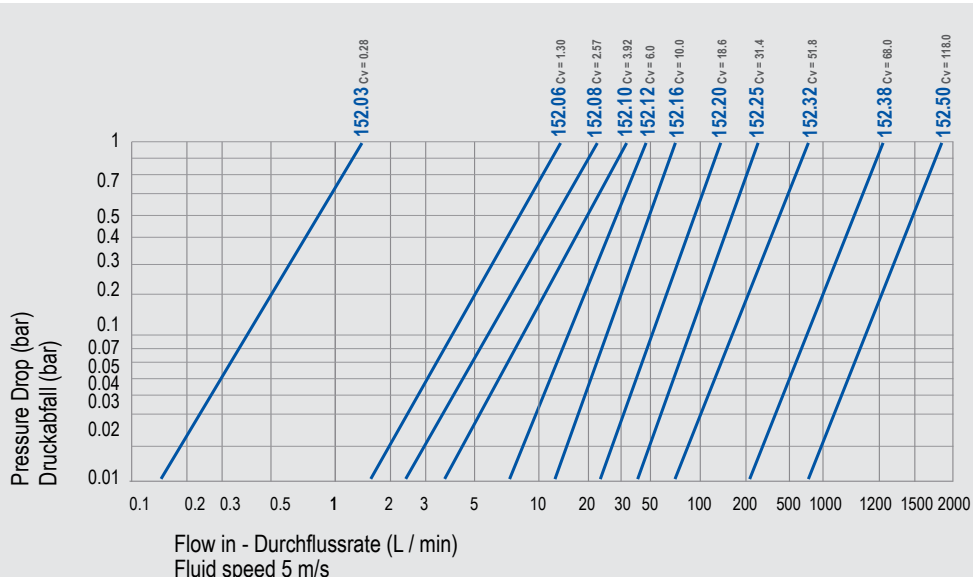
- On temperature regulation applications
with hot or cold water, oil etc.
- Blow moulding industry
- Injection moulding industries.
- On steam line.

Anwendungsbereiche

- Zuleitung für die Temperierung / Druckluft
- Blasformmaschinen Industrie
- Kühlung mit Öl oder Wasser
- Kunststoffindustrie



Flow Rate vs Pressure Drop Graph / Durchflussrate vs Druckabfall



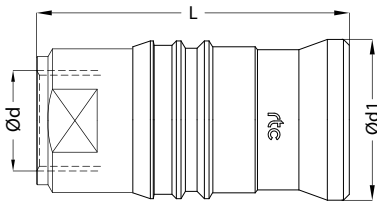
152
rtc TYPE

rtc TYPE 152

Female thread socket / Kupplung mit Innengewinde



Socket / Kupplung	Size / Größe	Order No / Bestellnr.	Ød	Ød1	L	HEX.
03		152.03 SFB 10	BSP 1/8	16	40	13
		152.03 SNB 10	NPT 1/8	16	40	13
06		152.06 SFB 13	BSP 1/4	22	43	30
		152.06 SNB 13	NPT 1/4	22	43	30
08		152.08 SFB 13	BSP 1/4	26.5	43	22
		152.08 SNB 13	NPT 1/4	26.5	43	22
		152.08 SFB 17	BSP 3/8	26.5	43	22
		152.08 SNB 17	NPT 3/8	26.5	43	22
10		152.10 SFB 17	BSP 3/8	30	54	25
		152.10 SNB 17	NPT 3/8	30	54	25
12		152.12 SFB 21	BSP 1/2	35	56	30
		152.12 SNB 21	NPT 1/2	35	56	30
16		152.16 SFB 26	BSP 3/4	42	81	35
		152.16 SNB 26	NPT 3/4	42	83	35
20		152.20 SFB 33	BSP 1	56	117	50
		152.20 SNB 33	NPT 1	56	117	50
25		152.25 SFB 33	BSP 1	64	119	50
		152.25 SNB 33	NPT 1	64	119	50
		152.25 SFB 42	BSP 1-1/4	64	119	50
		152.25 SNB 42	NPT 1-1/4	64	119	50
32		152.32 SFB 42	BSP 1-1/4	79	116	50
		152.32 SNB 42	NPT 1-1/4	79	116	50
		152.32 SFB 48	BSP 1-1/2	79	118	60
		152.32 SNB 48	NPT 1-1/2	79	118	60
38		152.38 SFB 48	BSP 1-1/2	93	135	60
		152.38 SNB 48	NPT 1-1/2	93	135	60
		152.38 SFB 60	BSP 2	93	142	75
		152.38 SNB 60	NPT 2	93	142	75
50		152.50 SFB 60	BSP 2	118	178	75
		152.50 SNB 60	NPT 2	118	178	75
		152.50 SFB 75	BSP 2-1/2	118	178	90
		152.50 SNB 75	NPT 2-1/2	118	178	90

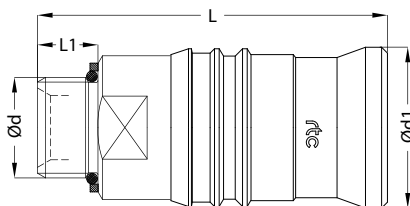


rtc TYPE 152

Male thread socket / Kupplung mit Aussengewinde



Socket / Kupplung	Size / Größe	Order No / Bestellnr.	Ød	Ød1	L	L1	HEX.
03		152.03 SOB 10	BSP 1/8	16	39	7	14
06		152.06 SOB 13	BSP 1/4	22	43	10	19
		152.06 SOB 17	BSP 3/8	22	43	10	20
08		152.08 SOB 13	BSP 1/4	26.5	43	10	22
		152.08 SOB 17	BSP 3/8	26.5	44	11	22
10		152.10 SOB 17	BSP 3/8	29	52	11	25
		152.10 SOB 21	BSP 1/2	29	53	12	25
12		152.12 SOB 17	BSP 3/8	35	54	11	30
		152.12 SOB 21	BSP 1/2	35	55	12	30
16		152.16 SOB 21	BSP 1/2	42	80	12	35
		152.16 SOB 26	BSP 3/4	42	83	16	35





Cylindrical female thread plug / Nippel mit Innengewinde zylindrisch

TYPE 152 **rtc**

Socket / Kupplung	Size / Größe	Order No / Bestellnr.	Ød	Ød1	L	L1	HEX.
	20	152.20 SOB 26	BSP 3/4	56	114	16	50
		152.20 SOB 33	BSP 1	56	117	19	50
	25	152.25 SOB 33	BSP 1	64	128	19	55
		152.25 SOB 42	BSP 1-1/4	64	128	19	55
	32	152.32 SOB 42	BSP 1-1/4	79	126	19	55
		152.32 SOB 48	BSP 1-1/2	79	129	22	60
	38	152.38 SOB 48	BSP 1-1/2	93	139	22	60
		152.38 SOB 60	BSP 2	93	140	23	65
	50	152.50 SOB 60	BSP 2	118	177	23	75
		152.50 SOB 75	BSP 2-1/2	118	184	25	90



Standard hose tail socket / Kupplung mit Standard Schlauchtülle

TYPE 152 **rtc**

Socket / Kupplung	Size / Größe	Order No / Bestellnr.	Ød	Ød1	L	L1
	03	152.03 SHB 03	3 mm	16	50	18
		152.03 SHB 06	6 mm	16	55	23
	06	152.06 SHB 06	6 mm	22	56	23
		152.06 SHB 08	8 mm	22	56	23
	08	152.08 SHB 08	8 mm	26.5	58	23
		152.08 SHB 10	10 mm	26.5	58	23
	10	152.10 SHB 10	10 mm	30	65	23
		152.10 SHB 12	12 mm	30	70	28
	12	152.12 SHB 12	12 mm	35	69	28
		152.12 SHB 16	16 mm	35	69	28
	16	152.16 SHB 16	16 mm	42	91	28
		152.16 SHB 19	19 mm	42	97	33



Push to connect hose tail socket / Kupplung mit Schnellsteck Schlauchtülle

TYPE 152 **rtc**

Socket / Kupplung	Size / Größe	Order No / Bestellnr.	Ød	Ød1	L	L1
	06	152.06 SPB 10	10 mm	22	57	24
		08	152.08 SPB 08	8 mm	26.5	59
	152.08 SPB 10		10 mm	26.5	59	28
	10	152.10 SPB 10	10 mm	30	66	24
		152.10 SPB 13	13 mm	30	71	28
	12	152.12 SPB 13	13 mm	35	69	28
		152.12 SPB 16	16 mm	35	69	28
	16	152.16 SPB 16	16 mm	42	92	28
		152.16 SPB 19	19 mm	42	102	38

rtc TYPE 152

Cylindrical female thread plug / Nippel mit Innengewinde zylindrisch



Plug / Nippel

Size / Größe

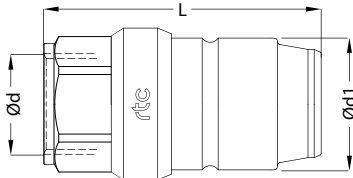
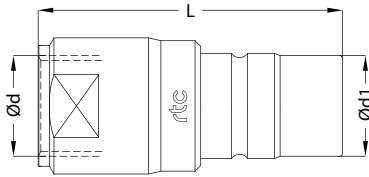
Order No / Bestellnr.

Ød

Ød1

L

HEX.



Plug Profile: 152.32 - 152.38 - 152.50

03	152.03 PFB 10	BSP 1/8	7.7	32.5	13
	152.03 PNB 10	NPT 1/8	7.7	32.5	13
06	152.06 PFB 13	BSP 1/4	11.7	44	17
	152.06 PNB 13	NPT 1/4	11.7	44	17
08	152.08 PFB 13	BSP 1/4	14.3	53	17
	152.08 PNB 13	NPT 1/4	14.3	53	17
	152.08 PFB 17	BSP 3/8	14.3	53	17
	152.08 PNB 17	NPT 3/8	14.3	53	17
10	152.10 PFB 17	BSP 3/8	17.5	64	25
	152.10 PNB 17	NPT 3/8	17.5	64	25
12	152.12 PFB 21	BSP 1/2	20.5	68	30
	152.12 PNB 21	NPT 1/2	20.5	68	30
16	152.16 PFB 26	BSP 3/4	27	73	35
	152.16 PNB 26	NPT 3/4	27	75	35
20	152.20 PFB 33	BSP 1	34	98	41
	152.20 PNB 33	NPT 1	34	99	41
25	152.25 PFB 33	BSP 1	41.5	97	50
	152.25 PNB 33	NPT 1	41.5	98	50
	152.25 PFB 42	BSP 1-1/4	41.5	97	50
	152.25 PNB 42	NPT 1-1/4	41.5	98	50
32	152.32 PFB 42	BSP 1-1/4	53	102	50
	152.32 PNB 42	NPT 1-1/4	53	102	50
	152.32 PFB 48	BSP 1-1/2	53	104	60
	152.32 PNB 48	NPT 1-1/2	53	104	60
38	152.38 PFB 48	BSP 1-1/2	66	112	60
	152.38 PNB 48	NPT 1-1/2	66	112	60
	152.38 PFB 60	BSP 2	66	116	75
	152.38 PNB 60	NPT 2	66	116	75
50	152.50 PFB 60	BSP 2	82.5	144	75
	152.50 PNB 60	NPT 2	82.5	144	75
	152.50 PFB 75	BSP 2-1/2	82.5	147	90
	152.50 PNB 75	NPT 2-1/2	82.5	147	90

rtc TYPE 152

Standard hose tail plug / Nippel mit Standard Schlauchtülle



Socket / Kupplung

Size / Größe

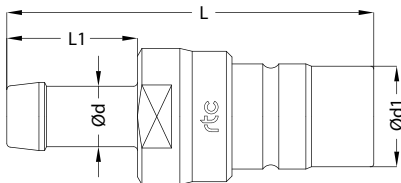
Order No / Bestellnr.

Ød

Ød1

L

L1



03	152.03 PHB 03	3 mm	7.7	43	18
	152.03 PHB 06	6 mm	7.7	48	23
06	152.06 PHB 06	6 mm	11.7	58	23
	152.06 PHB 08	8 mm	11.7	58	23
08	152.08 PHB 08	8 mm	14.3	64	23
	152.08 PHB 10	10 mm	14.3	64	23
10	152.10 PHB 10	10 mm	17.5	75	23
	152.10 PHB 12	12 mm	17.5	80	28
12	152.12 PHB 12	12 mm	20.5	81	28
	152.12 PHB 16	16 mm	20.5	81	28
16	152.16 PHB 16	16 mm	27	84	28
	152.16 PHB 19	19 mm	27	89	33



Male thread plug with o-ring / Nippel mit Aussengewinde mit o-ring

TYPE 152 **rtc**

Plug / Nippel	Size / Größe	Order No / Bestellnr.	Ød	Ød1	L	L1	HEX.
	03	152.03 POB 10	BSP 1/8	7.7	32	7	13
	06	152.06 POB 13	BSP 1/4	11.7	45	10	17
	08	152.08 POB 13	BSP 1/4	14.3	52	10	22
		152.08 POB 17	BSP 3/8	14.3	53	11	22
	10	152.10 POB 17	BSP 3/8	17.5	61	11	25
		152.10 POB 21	BSP 1/2	17.5	62	12	25
	12	152.12 POB 17	BSP 3/8	20.5	66	11	30
		152.12 POB 21	BSP 1/2	20.5	67	12	30
	16	152.16 POB 21	BSP 1/2	27	69	12	35
		152.16 POB 26	BSP 3/4	27	73	16	35
20	152.20 POB 26	BSP 3/4	34	92	16	41	
	152.20 POB 33	BSP 1	34	95	19	41	
25	152.25 POB 33	BSP 1	41.5	102	19	50	
	152.25 POB 42	BSP 1-1/4	41.5	102	19	50	
32	152.32 PMB 42	BSP 1-1/4	53	110	19	55	
	152.32 PMB 48	BSP 1-1/2	53	113	22	60	
38	152.38 PMB 48	BSP 1-1/2	66	122	22	60	
	152.38 PMB 60	BSP 2	66	128	23	70	
50	152.50 PMB 60	BSP 2	82.5	151	23	75	
	152.50 PMB 75	BSP 2-1/2	82.5	153	25	90	

Plug Profile: 152.32 - 152.38 - 152.50



Push to connect hose tail plug / Nippel mit Schnellsteck Schlauchtülle

TYPE 152 **rtc**

Socket / Kupplung	Size / Größe	Order No / Bestellnr.	Ød	Ød1	L	L1
	06	152.06 PPB 10	10 mm	11.7	59	24
	08	152.08 PPB 08	8 mm	14.3	65	24
		152.08 PPB 10	10 mm	14.3	65	28
	10	152.10 PPB 10	10 mm	17.5	75	23
		152.10 PPB 13	13 mm	17.5	80	28
	12	152.12 PPB 13	13 mm	20.5	81	28
		152.12 PPB 16	16 mm	20.5	81	28
	16	152.16 PPB 16	16 mm	27	85	28
		152.16 PPB 19	19 mm	27	95	38